

Technical article

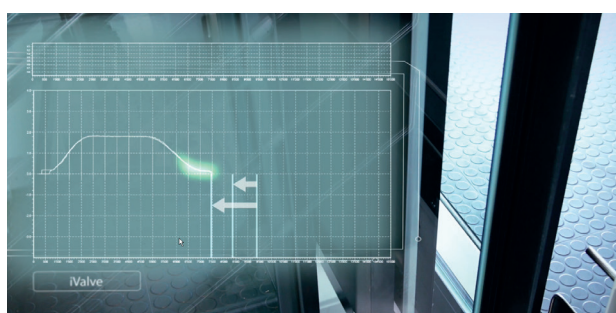
# Big Potential for Greater Efficiency

## By networking the intelligent iValve and CANopen-Lift, Bucher Hydraulics opens up new avenues for the commissioning and service of elevators

Digitalization and networking offer completely new possibilities for modern elevator hydraulics. With the ongoing development of its valve technology in conjunction with sensors and bus systems, Bucher Hydraulics is at the forefront of innovative solutions in this field. Viewed as a development platform, the intelligent iValve with CANopen-Lift interface offers far-reaching improvement potential for hydraulic elevators – a potential that is already being exploited in the area of time- and cost-saving installation and commissioning. In addition, elevator manufacturers can develop new service concepts thanks to remote monitoring and the predictive maintenance that results from it. All in all, these advantages increase competitiveness and secure the elevator manufacturer's market position.

“Better to start right now than to wait for the total industrial revolution that is coming,” is the motto for new technologies in hydraulic elevators. If the elevator concept, which has been reliable for decades, is to be enhanced to meet future requirements, this will be a job best done step-by-step. The primary objective is not “Industry 4.0”, but rather reductions in workload, such as shorter commissioning times and faster data access, which result from networking and implementing digital technologies. The prerequisite, however, is that the right basic components are selected. This will ensure that, in the event of later adaptations or extensions, all avenues are open. As a specialist and pioneer in the development of components for hydraulic elevators, Bucher Hydraulics uses its decades of product know-how as well as its extensive industry insights to show elevator manufacturers valuable potential for increasing efficiency.

Right from the start of the development and construction of the iValve, this extensive background knowledge led the specialists to attach great importance to economic efficiency and future application possibilities. The intelligent valve works with a particular learning algorithm that balances and optimizes basic settings and current travel data. This intrinsic intelligence ensures that the car starts faster and can approach the destination floor without any delay. This shortens the travel time and raises energy efficiency. For these reasons, the valve has become the new benchmark in elevator hydraulics.



Intelligent solutions for reliable hydraulic elevators start with the valve. The iValve from Bucher Hydraulics is a self-learning elevator control valve with standardized bus protocol. It offers the best prerequisites for high system availability.

## Several display variants for quick access

The integrated electronics include all the parameters for setting speed, acceleration, etc. Up to now, elevator technicians have been able to change these values locally at the elevator system using a hand-held terminal. This means, however, that specific hand terminals must not only be available for components such as the drive, elevator controls or doors, but must also be available immediately for on-site interventions, which in turn involves additional costs.

In addition, the know-how for operating the hand terminals must be available. For this reason, Bucher Hydraulics has now taken a significant step forward and is the first manufacturer of elevator hydraulics to use the CANopen-Lift interface as a future-proof method of connecting the intelligent valve to popular elevator controllers.

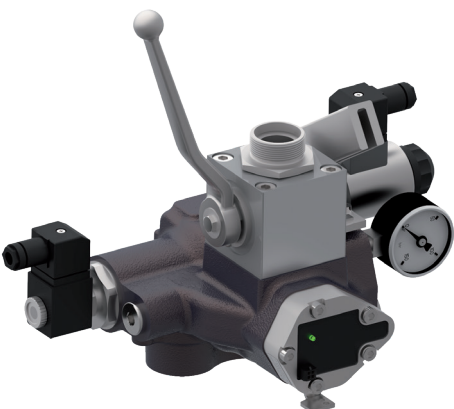
*“The iValve can communicate directly with the elevator controller.”*

In conjunction with the iAccess valve function and the built-in sensors for measuring pressure and temperature, the iValve can now also communicate directly with the elevator controller via bus protocol. Travel commands are transmitted rapidly, operating data and status/error messages can be displayed at the elevator controller, and valve parameters can also be changed right at the elevator controller. This innovative technology offers several advantages. During installation and commissioning, the decreased amount of cabling saves time and also reduces the possible sources of errors. In addition, a fault memory provides all the relevant information that helps technicians to make informed decisions about how to correct an elevator fault.

The data can be displayed in different ways depending on the elevator controller. The spectrum ranges from 2-line displays, through TFT displays and touch screens to smartphone apps via Bluetooth and is constantly being developed and extended. Users thus have a clear understanding of the system’s minute-by-minute operation without the need for any additional equipment and can intervene quickly using the existing elevator controller.

The iValve series of intelligent valves from Bucher Hydraulics sets new standards in elevator hydraulics. Featuring a CANopen-Lift interface, all operation-relevant information such as parameters and status data can be accessed via the elevator controller.

Bucher Hydraulics offers innovative drive solutions for hydraulic elevators. The sophisticated, sector-specific solution using the intelligent iValve shortens elevator installation and commissioning times and enables fast, proactive responses.



## Early planning saves time & money

The unique diagnostic functions, which are based on the information made available and then transmitted via bus systems, form the basis for the predictive maintenance or needs-oriented service that has the aim of increasing the system availability. The early planning of predictable measures saves time, travel and costs, as potential faults can be identified long before a possible stoppage.

Applying the innovative valve technology of the iValve in conjunction with CANopen-Lift, elevator manufacturers can use it to suit the particular requirements that the elevator must fulfill, and configure it for future customer needs. In further steps, systems can increasingly be networked and digitalized, thus making them smarter. Of course, this also applies to the modernization of existing hydraulic systems.

## Countless possibilities instead of just one solution

Starting with the implementation of the intelligent valve together with its standardized interface, the spectrum extends to the complete networking of the elevator components via the Internet, where remote access also enables the data to be monitored on a central computer in a control room and retrieved as necessary. In this way, fast access is guaranteed – for example, in public buildings with a high level of traffic, such as train stations or shopping centers. To protect against cyber attacks, Internet connections can be individually restricted by means of selected access rights.

*“The actual need for repairs can be identified in good time through continuous awareness”*



High availability is the ultimate goal of networking elevators. The innovative valve technology from Bucher Hydraulics sets new standards and helps users to implement predictive maintenance concepts thanks to a continuous awareness of the condition of the equipment.

In the age of the „Internet of Things“, predictive maintenance solutions are the new core competence. There are various versions of these predictive maintenance solutions, but the objective is always the same: avoid costly downtime, allocate maintenance resources more effectively and plan maintenance activities more economically. Digital real-time monitoring helps to ensure that components are no longer needlessly repaired or replaced just because it is specified in the schedule. Instead, and even without an on-site visit, the actual need for repairs can be identified at an early stage through continuous awareness, so the previously customary inspection visits are no longer necessary and deployment plans can be optimized.

All in all, digitalization and networking change not only the manufacturing of elevators, but also their commissioning and the entire service process, in which reliable and life-extending maintenance measures are key factors. Maintaining a hold on a market position and/or aiming for company growth already demand that elevator manufacturers have larger sales territories involving longer journeys. Integrating new technologies into the business model can significantly improve the management of these larger territories, as service personnel can be deployed more efficiently thanks to up-to-date information. The intelligent iValve from Bucher Hydraulics already offers the prerequisites needed to meet all these challenges and to be able to press the strategic UP button to “Lift 4.0” at an early stage.

**Contact:**

Bucher Hydraulics AG  
Industriestrasse 15  
CH-6345 Neuheim  
eMail: [elevator@bucherhydraulics.com](mailto:elevator@bucherhydraulics.com)  
[www.bucherhydraulics.com](http://www.bucherhydraulics.com)

Smart Solutions.  
Superior Support.